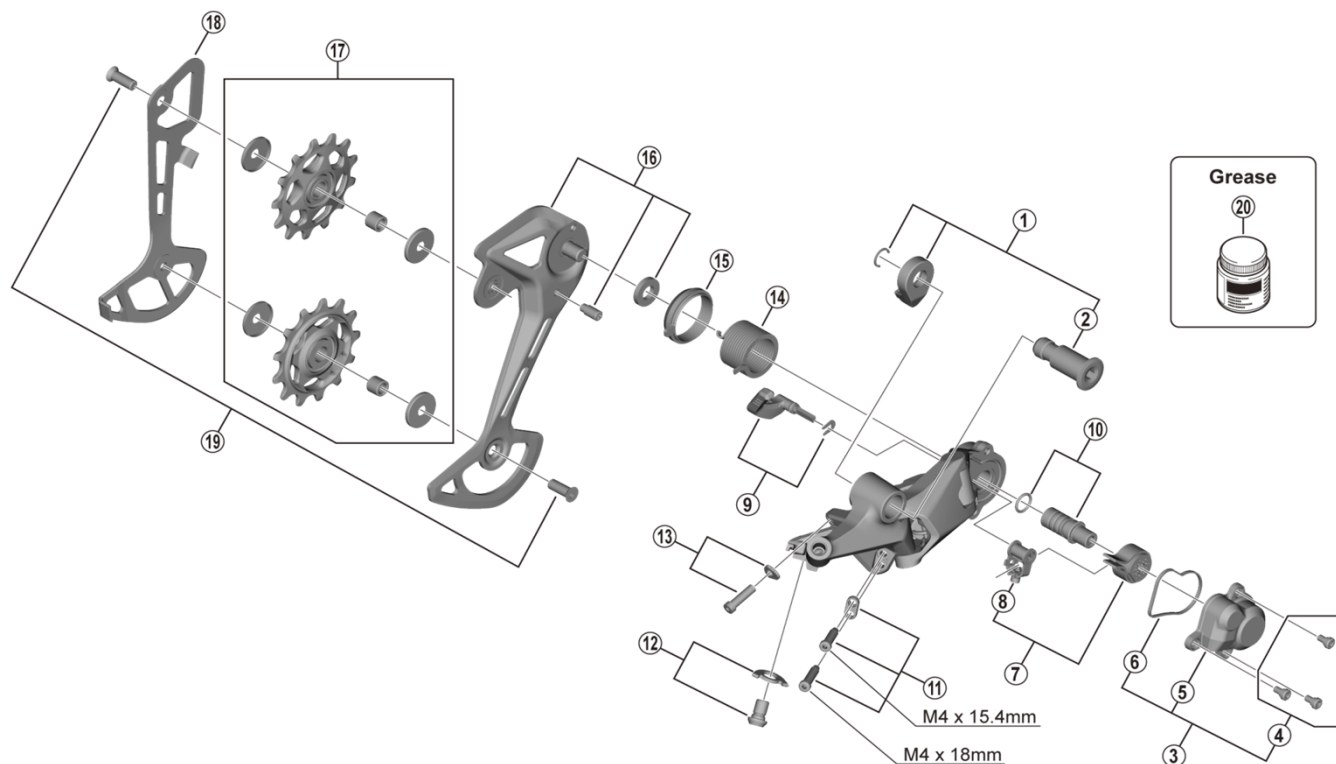


DEORE Rear Derailleur

RD-M5100-SGS 11-speed



ITEM NO.	SHIMANO CODE NO.	DESCRIPTION
1	Y3HL98020	Bracket Axle Unit
2	Y3HK42000	B-Axle
3	Y3FY98030	P-Cover Unit
4	Y5Y198070	P-Cover Screw Set (3 pcs.)
5	Y3FY46000	P-Cover
6	Y3FA63000	P-Cover Packing
7	Y3GF98040	Stabilizer Unit
8	Y3E498040	Cam Unit
9	Y3FA98040	Switch Lever Unit & Fixing Plate
10	Y5PV98060	P-Axle & O-Ring
11	Y3FW98050	Stroke Adjusting Screws & Plate
12	Y3FW98060	Cable Fixing Screw & Plate
13	Y3FW98070	End Adjust Screw (M4 x 14.1) & Plate
14	Y3FA55000	P-Tension Spring
15	Y3FA62000	P-Seal Ring
16	Y3HL98030	Outer Plate Assembly (SGS)
17	Y3HL98010	Tension & Guide Pulley Set
18	Y3HK26000	Inner Plate (SGS)
19	Y5V598140	Pulley Screw 12.5 mm (2 pcs.)
20	Y04121000	New Grease for Stabilizer (Net. 50g)

May-2020-4675
© Shimano Inc. I

Specifications are subject to change without notice.

SHIMANO